

# explorer

PHOTO & VIDEO

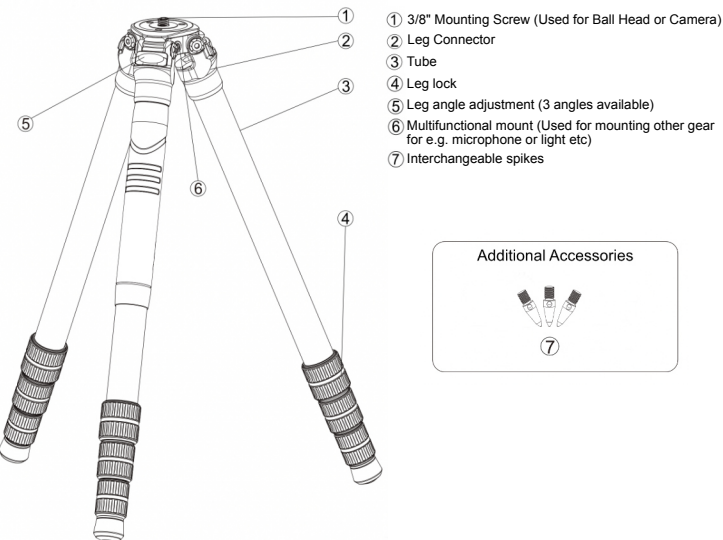
## Explorer EX-ACPRO Ascent Professional Carbon Fibre Tripod



## Specifications

MAX DIAMETER	MAX HEIGHT	RETRACTED HEIGHT	MATERIAL	SECTIONS	WEIGHT	MAX LOAD	INSIDE DIAMETER
32mm 1.26"	1445mm 56.89"	520mm 20.47"	CARBON	4	1.66kg 3.66oz	26kg 57.3lb	70mm 2.76"

## Components



### Additional Accessories



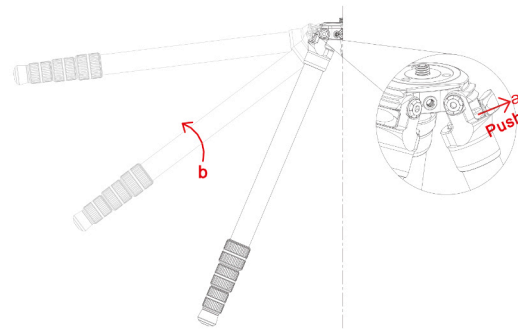
## Maintenance

1. Prevent the tripod from getting fouled in mud, dirt or sand
2. Blow off any sand or dust, or wipe it off with a soft cloth
3. Rinse any mud, dirt salt water and dry it thoroughly
4. Do not submerge the ball head in liquid
5. Do not apply any lubricant
6. Do not remove any of the knobs. this can damage the threads and ball locking mechanism.

## Operating Instructions

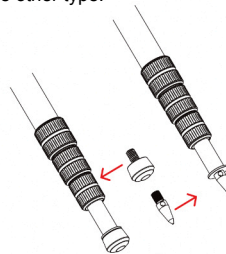
### Leg angle adjustment

To change the angle of the tripod leg, pull out the tab (A) and pull the leg to the desired angle (3 options). Push the tab back in place to lock it to the desired angle.



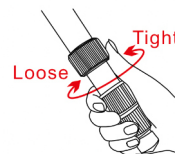
### Rubber and Metal Spike foot conversion.

Depending on your preference, you can change the foot to either the rubber feet (better for indoor use or firm outdoor ground) or the metal spikes (better for unstable ground e.g. sand or rocks). To change these, simply unscrew the foot and screw in the other type.



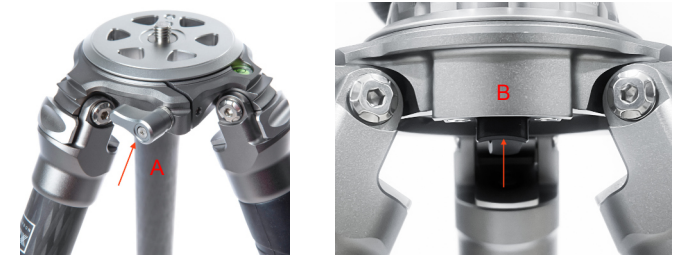
### Leg locks

To adjust the height of the tripod, twist the leg locks a 1/2 twist clock wise to release the leg. Pull out to the desired height and 1/2 twist counter clock wise to secure into place. Ensure these are tightly secured before removing hand off tripod.



## Removable flat base

To remove the base plate, twist the side lock to loosen plate (A). To remove plate press button (B) and pull plate out. To put plate back in, place the plate and tighten lock (A)



## Accessory ports

3/8" and 1/4" accessory ports are located on the centre junction to mount accessories. To mount simply screw the accessory into the relevant port.



## Stabilising hook

To add extra weight for windy conditions, a stabilising hook is located at the base of the centre junction. Simply attach weights or camera bag if needed.



## Warranty

Explorer Photo & Video warrants its products with a 5 year limited warranty. Please visit our webpage for all warranty details: [www.explorerphotovideo.com.au](http://www.explorerphotovideo.com.au)

## Notes

1. Working temperature -40C- 60C
2. Ensure all leg locks are secure before taking your hand off the tripod
3. Do not use the tripod for anything other than its intended use
4. Do not exceed max load limit

## EXPLORE | CAPTURE | CREATE

Follow us on Instagram

@explorerphotovideo

Explorer Photo and Video

Sydney, Australia

Los Angeles, United States of America

W: [explorerphotovideo.com](http://explorerphotovideo.com)

E: [hello@explorerphotovideo.com](mailto:hello@explorerphotovideo.com)

