

## Vertical Explorer R5/R6 L-Bracket - VX-R5

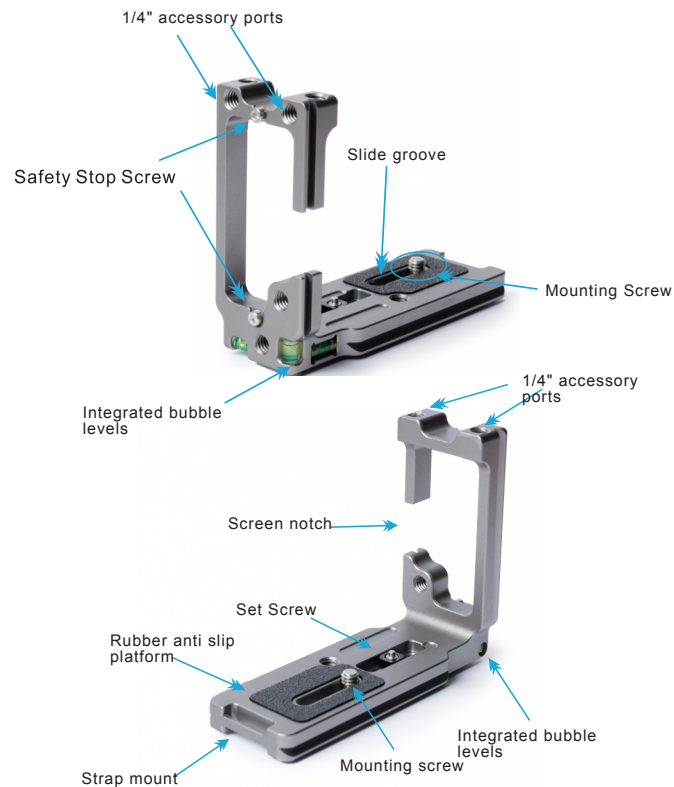
Explorer Photo & Video L-Brackets are made from aircraft grade aluminum alloy and are precisely CNC machined to give optimum fit and function. The anodised finish is hardened to ensure durability and the arca compatible rails provide great cross compatibility with arca compatible clamps. L-brackets are vital for keeping the camera centred over the ball head to ensure maximum stability and usability while out in the field.

The VX-R5 is designed for the Canon R5/R6 cameras and allows for great access to the ports to use remotes and other inputs. The articulating screen can be used in different orientations without being impeded. Accessories can also be mounted to the included 1/4" mounting ports.

### Specifications

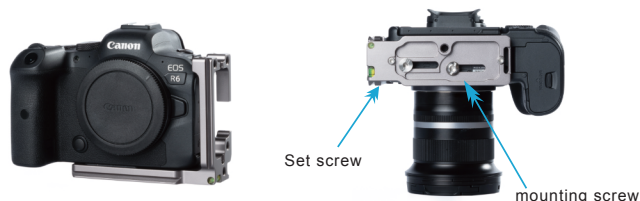
Length - 113mm / 4.4 inches	Width - 39mm / 1.5 inches
Height - 91mm / 3.6 inches	Weight - 111g / 3.9oz
Mounting Screw UNC-1/4"-20	Compatibility - Canon R5/R6

### Components



### Operating Instructions

- 1 - Place the camera on the L-bracket and ensure the camera is centred.
- 2 - Fasten the mounting screw using the provided 4mm hex wrench. Ensure the screw is tight but do not over tighten. Lightly tighten the set screw to ensure the plate is stable and will not twist on the camera.



- 3 - Mount the camera to the ball head by adding the dove tail of the L-bracket to the ball head clamp and ensuring the clamp is tightened. The camera can be mounted in landscape or portrait orientation.



- 4 - For easy access to the ports while shooting in portrait/vertical orientation, release the mounting screw and the set screw with the included 4mm hex wrench and slide the L-bracket laterally from the camera. Re-tighten the mounting screw and set screw to secure the camera.



- 5 - The articulating screen can be repositioned easily without interference from the bracket



- 5 - Accessories can be mounted to the L-Bracket via the 1/4" accessory mounts. The battery door remains fully accessible so batteries can be easily swapped.



### Compatibility

The VX-R5 is compatible with the Canon R5/R6 cameras. The sliding groove design allows for access to the ports and to utilise the ports and remotes while shooting in vertical orientation. The fully articulating screen can be used in different orientations without being impeded. Not compatible with battery grip fitted.

### Notes

1. Working Temperature: -40°C - 60°C.
2. Please store the product in cool dry place if you will not use it for a long time.
3. For the safety of your equipment, please make sure the plate is assembled tightly when moving your camera.
4. Please avoid dropping and impact to the product.
5. Please use this product only for photography.

### Warranty

Explorer Photo & Video warrants its products with a 1 year limited warranty. Please visit our webpage for all warranty details - [Explorerphotovideo.com.au](http://Explorerphotovideo.com.au)

### In the box

VX-R5 x 1, 1/4" mounting screw x 1, set screw x 1, safety stop screws x 4, Tool

### Follow us on Instagram

@explorerphotovideo



### Explorer Photo and Video

Sydney, Australia

Los Angeles, United States of America

W: [explorerphotovideo.com](http://explorerphotovideo.com)

E: [hello@explorerphotovideo.com](mailto:hello@explorerphotovideo.com)