







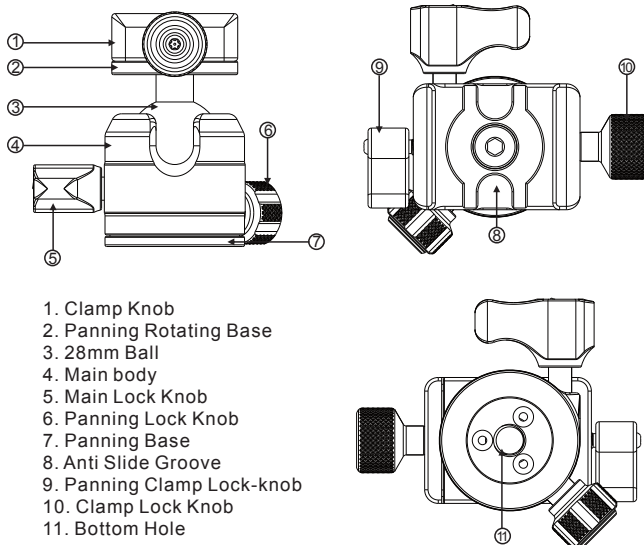
Travel Explorer Pro Ballead - TX-PRO



Specifications

 Ball Diameter	28mm/1.1"	 Base Diameter	40mm/1.57"
 Height	72mm/2.8"	 Bottom Thread	UNC 3/8" - 16
 Max Load	4.5KG/9.9 lbs	 Weight	236g/0.52 lbs

Components



1. Clamp Knob
2. Panning Rotating Base
3. 28mm Ball
4. Main body
5. Main Lock Knob
6. Panning Lock Knob
7. Panning Base
8. Anti Slide Groove
9. Panning Clamp Lock-knob
10. Clamp Lock Knob
11. Bottom Hole

Operating Instructions

1. Mounting on a tripod or monopod

- 1) Tighten the Panning Knob to lock the Panning Base.
- 2) Screw the ballhead clockwise onto the 3/8"-16 mounting stud on the top of the tripod. (use 3/8"-16 bushing reducer if the tripod has a UNC 1/4"-20 mounting stud.)
- 3) Tighten the ball head onto the tripod firmly, but do not over-tighten otherwise it will be difficult to remove.



2. Camera Attachment

- 1) Attach the included EX-37 quick-release plate to the camera. (Note: Users can use other plate desired instead of the included EX-37). (Fig 1)
- 2) Loosen clamp knob by turning anticlockwise to allow the plate in.
- 3) If safety screws are mounted under the quick release plate, then insert one side of the plate dovetail into the clamp, and press the other side down completely. (Fig 2)
- 4) If there are no safety screws under the quick release plate, you may slide the plate into the clamp.
- 5) After fore-aft or lateral adjustment of the plate (depending on its orientation), tighten the clamp knob by turning clockwise and lock the plate firmly.



(Fig 1)



(Fig 2)

3. Main Knob



Before shooting, users can lock the ball swiftly by rotating the main knob in clock-wise direction to stabilise the position of the camera. When the main knob is locked, users can pull the main knob up and go on adjusting in either direction to tighten or loosen. The main knob can be fixed at any position desired. Rotating the main knob in clock-wise direction to tighten the ball and in counter clock-wise direction to loosen it. Note: Please hold the camera when adjusting the main knob to make sure the equipment will not fall accidentally; When the main knob is locked, hold the camera by two hands and the ball can not be moved.

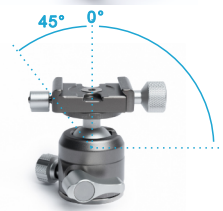
4. Panning Base Operation

- 1) Loosen the panning base knob by turning anticlockwise.
- 2) Pan the head body by one hand and adjust its panning position, holding the camera with your other hand for security. * Index Mark : An inverted triangle is laser engraved next to the panning base knob on the head body.
- 3) Tighten the Panning Base by turning the Panning Base Knob clockwise.



5. Ball Head Tilt Range (45°-90°)

Quick switching between lateral and vertical shooting due to this design.



6. Panning Clamp

The newly added panning clamp with horizontal screw-knob, loosen which will enable the clamp to rotate 360 degrees for panoramic shooting; By combination of the top rotating base and bottom panning base to carry out dual-panoramic effect.



Load Capacity

Load capacity varies with the tilt angle of the ball.

Explorer Photo and Video ball heads utilise a unique Ellipsoidal Ball structure with an innovative internal locking system to improve the performance and stability of operation. With camera orientation in order to find the preferred position, the centre of gravity of the camera moves and produces a torque. Thanks to the diameter differences in x and y axes, the ball receives a progressive pressure from the locking system to balance the tilting torque. In this specific locking system, even at large tilt angles, the ball head is still capable of locking quickly and firmly. When the tilt angle is 0°, the tilting torque is 0°, under which the ball head reaches its "max load capacity", As follows.

Maintenance

- 1) Explorer Photo and Video Ball Heads receive necessary lubrication during manufacturing. No further lubrication should be performed by the user. Any extra lubrication will decrease the performance of the ball head and may tend to attract unwanted dirt & dust. Try to keep the ball free from contamination as possible, this will ensure you retain smooth action.
- 2) Prevent your ball head from getting fouled in mud, dirt or sand.
- 3) Blow off the sand or dust, or wipe off with the Cotton Cloth in accessory bag.
- 4) Wipe off the mud or salt water with a wet cloth and then thoroughly dry.
- 5) DO NOT submerge the ball head when washing and do not direct a high-pressure stream of water at the ball head.
- 6) None of the knobs are designed to be removed, so do not attempt to remove them as you risk damaging your ball head. If fine sand/grit fouls a knob, simply run a gentle stream of water around the knob while rotating it one-half turn back and forth.

Notes

Working Temperature: -40°C to 60°C . It is advisable to loosen all the knobs when you do not use the ball head for long periods. Every time you move the tripod or transfer the ball head, make sure the camera equipment is secure by removing or holding the camera equipment. DO NOT use this Ball head as other tool than its original purpose of design.

Warranty

Explorer Photo & Video warrants its products with a 1 year limited warranty. Please visit our webpage for all warranty details - Explorersphoto.com.au

In the box

Travel Explorer Pro Ballhead x 1, EX-37 QR Plate x 1, Tool Kit x 1

Explorer Photo and Video

Sydney, Australia

Los Angeles, United States of America

W: explorersphoto.com

E: hello@explorersphoto.com

Follow us on Instagram

@explorersphoto

